

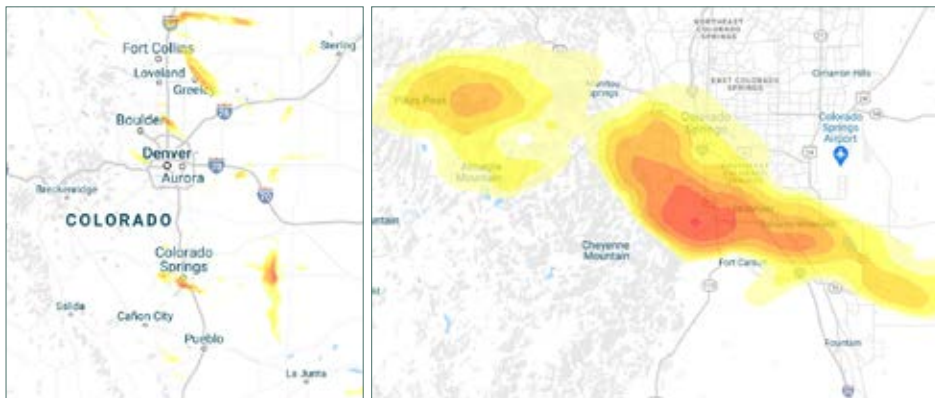
# Parametric HAIL™ : a customer success story



Automotive Industry Testimonial

## Colorado is one of the most hail-prone states in the U.S. Most hailstorms occur between May and September.

The event: On August 5th, 2020, an upper level trough spawned severe thunderstorms throughout much of eastern and central Colorado, bringing high winds, hail and isolated tornadoes throughout much of the Denver and Colorado Springs metro area.



Hail size of up to 2 inches in diameter led to insured industry losses of more than USD 196 million.

### The impact and the policy:

Two of our parametric HAIL™ customers – in the automotive industry – were impacted by the event. Our hail data provider, CoreLogic, confirmed the size of the hail at the insureds' respective locations and their policies qualified them both for payouts.

The policyholders received a combined payout of USD 1.1 million. Both claims settled in a matter of days, consistent with our parametric products that typically pay out in less than four weeks, and helping our customers recover and get back to "business as usual" faster.

"Already well-established in the parametric insurance space for hurricane and earthquake, Swiss Re Corporate Solutions again demonstrated their forward thinking and ability to innovate by offering HAIL™. A parametric solution that responded exactly as our clients needed. The claims adjustment process was timely and transparent, allowing my clients to quickly address the damage and avoid revenue loss."

**Richard Alan Duer,**  
Broker, HailSure

### Advancing Innovative Risk Solutions Together

Learn more about HAIL™ at:  
[corporatesolutions.swissre.com/hail](https://corporatesolutions.swissre.com/hail)  
Learn more about our parametric products at:  
[corporatesolutions.swissre.com/parametric](https://corporatesolutions.swissre.com/parametric)

### How does parametric HAIL™ work?

